

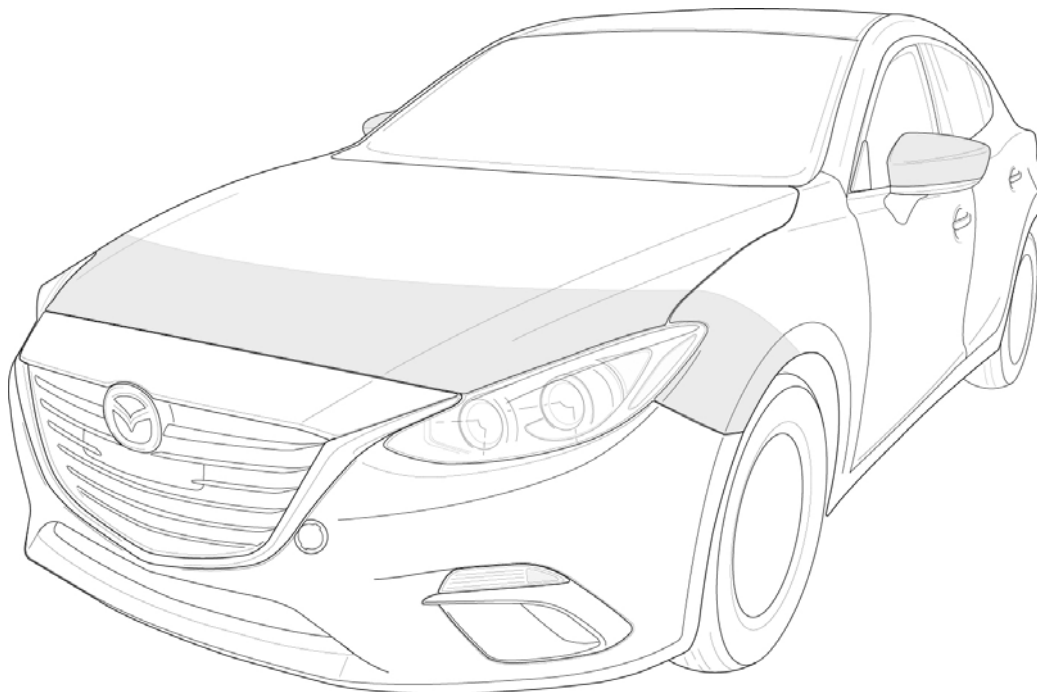


FITTING INSTRUCTIONS

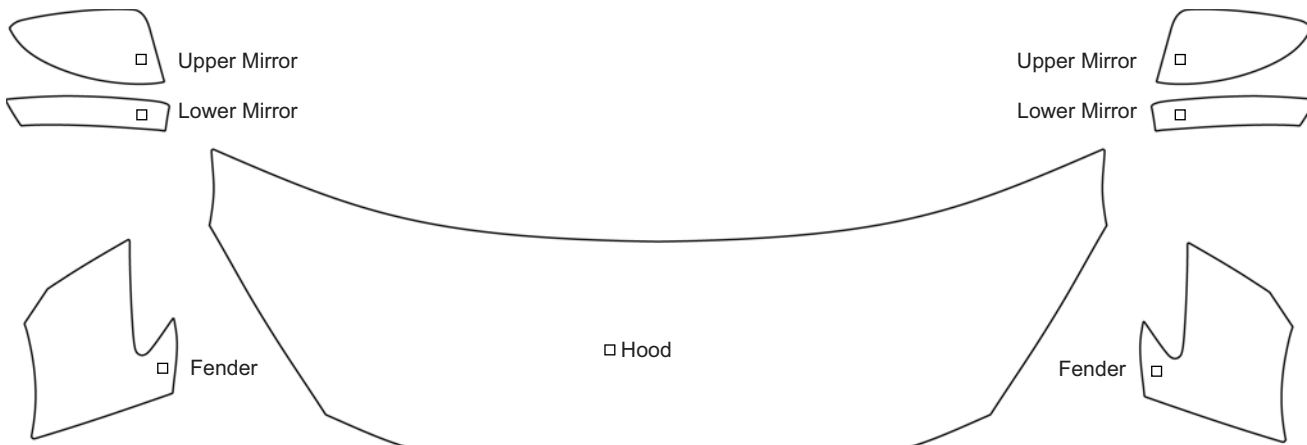
Part #: 0000-8W-L45
0000-89-L45

2014 MAZDA3 4-Door & 5-Door

Paint Protection Film: Partial Front Kit



Kit Contents



Tools



1. 70% Isopropyl Alcohol
2. Squeegee
3. H₂O Mix
4. Baby Shampoo
5. Wipes
6. Microfiber Towels

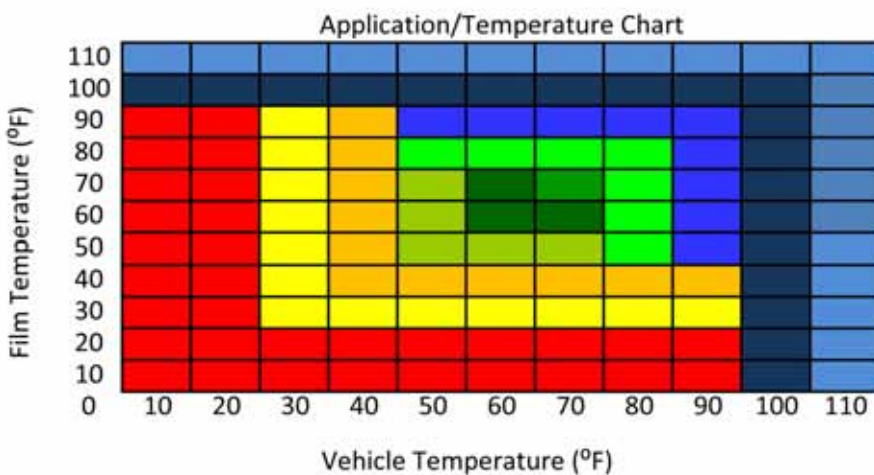
Optional Tools:

7. Heat Gun
8. Clay Bar
9. Supplementary Tools

Installation Solution Mixture Guide

Baby Shampoo & Water Solution

The solution mixture is extremely crucial for a proper installation. The mixture will vary depending on temperature. Follow the instructions and see the chart for guidance.



What you'll need:

1. (2) 32 oz Spray Bottles
2. Water (Distilled Preferred)
3. 70% Isopropyl Alcohol

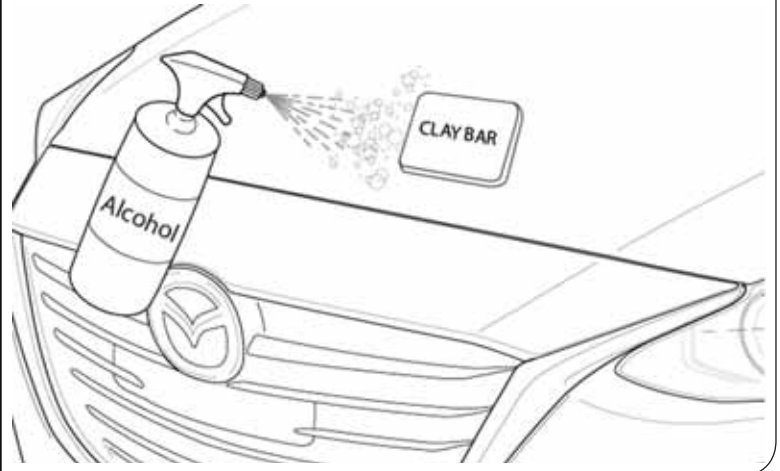
Mixing Installation Solutions:

1. Fill up 1st spray bottle with water (distilled preferred).
2. Add 4 drops of Unscented Johnson's Baby Shampoo
3. Shake Well
4. 2nd spray bottle will be used for Isopropyl Alcohol. This accelerates the adhesive to be more aggressive. It will be 60% water and 40% alcohol. It is used for tacking areas and holding edges from lifting.

- Install Not Recommended at temp. Cool down car or film by spraying cold water on vehicle surface.
- Install Not Recommended at temp. Cool down car or film by spraying cold water on vehicle surface.
- Good Install Conditions. Mix 6 drops of shampoo to 32 oz of water (distilled preferred), compensate for heat.
- Excellent Install Conditions. Mix 5 drops of shampoo to 32 oz of water (distilled preferred).
- Ideal Install Conditions. Mix 4 drops of shampoo (aprox 1/4 in size) to 32oz of water (distilled preferred).
- Excellent Install Conditions. Mix 4 drops of shampoo (aprox 1/4 in size) to 32oz of water (distilled preferred).
- Good Install Conditions. Decrease amount of soap, add 2-4 oz of 70% isopropyl alcohol to mix.
- Install Not Recommended at this temperature. Warm up vehicle's paint and film before applying.
- Install Not Recommended at this temp. Warm up vehicle's paint and film before applying.
- Install Not Recommended at this temp. Warm up vehicle's paint and film before applying.

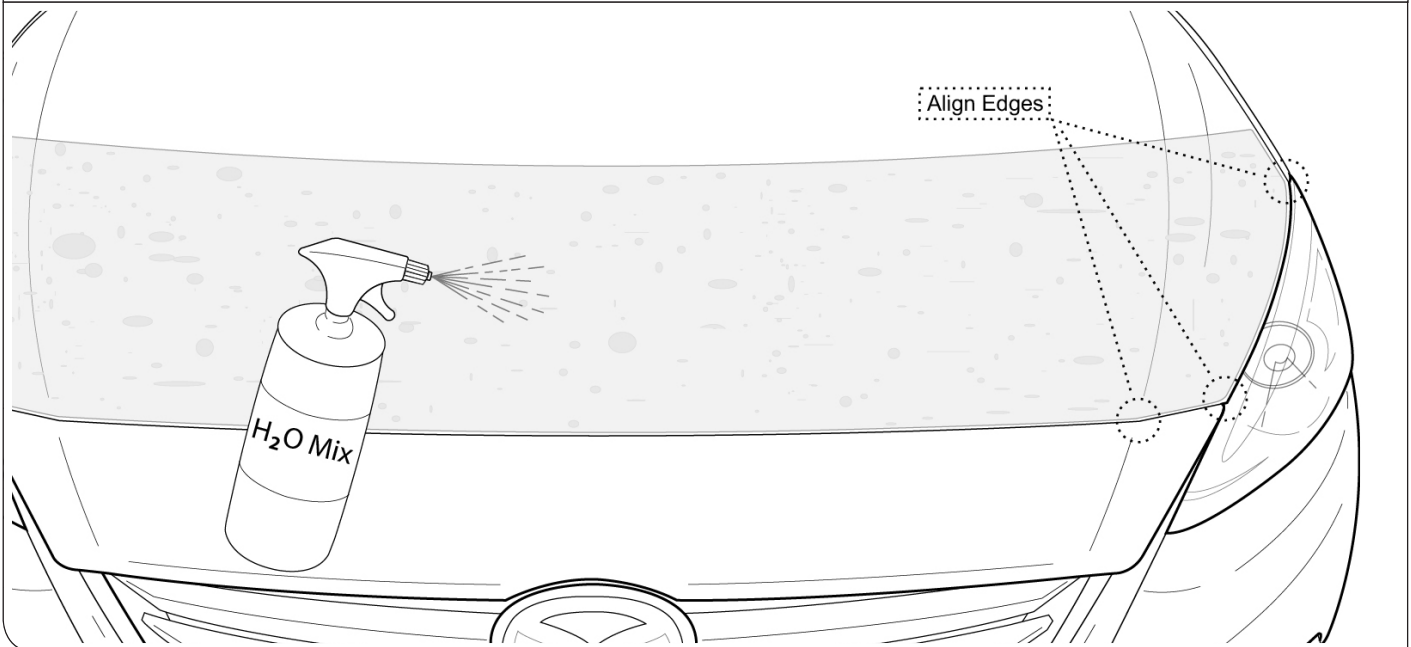
Vehicle Cleaning Prep

- 1 Always before applying PPF film be sure to clean and prep the surface using an alcohol based cleaner or degreaser if needed. Additional prep may include using a clay bar to clean very small stubborn debris.



Hood Application: Upper Hood

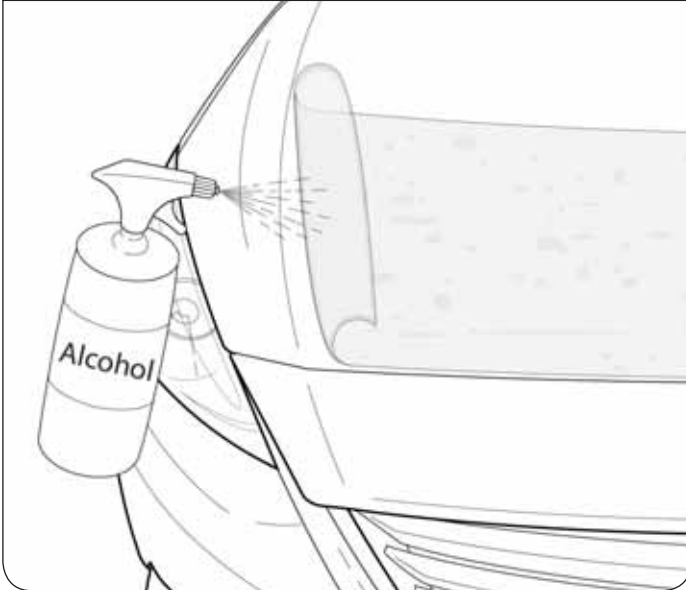
- 1 Spray vehicle surface wetting it thoroughly, also finger tips and surface of film, using baby shampoo and distilled water mixture. Spray surface of film, then remove PPF from sheeting, place pattern on hood of car. Note the edges of the hood and align properly.



Hood Continued →

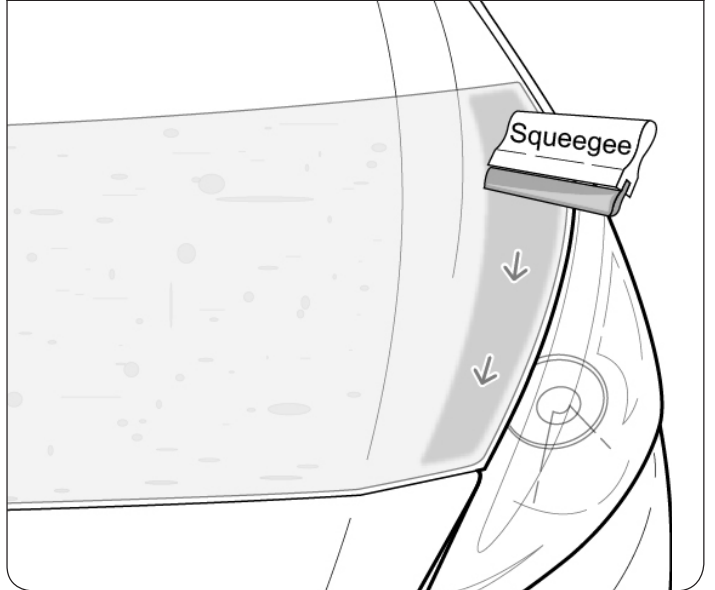
2

Apply a 1-2" inch alcohol tack on the passenger side of hood. Repeat this step on driver's side.



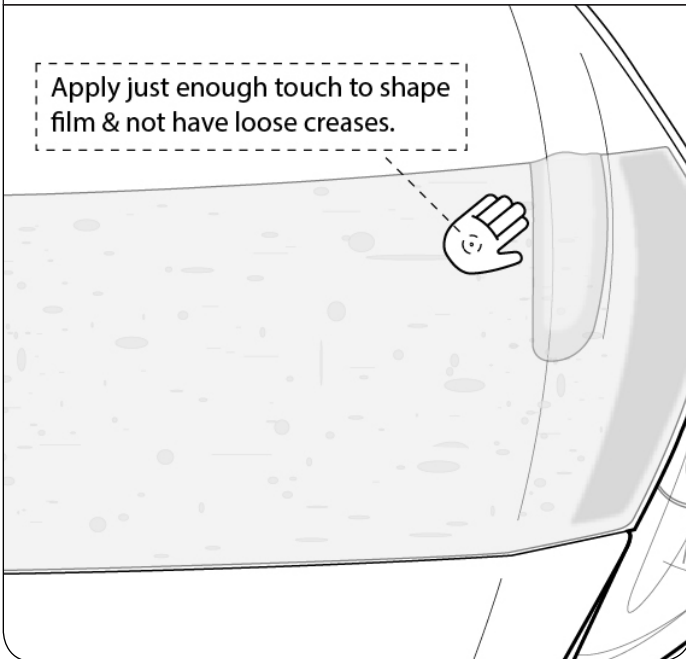
3

Squeegee down areas and align edges with the hood.



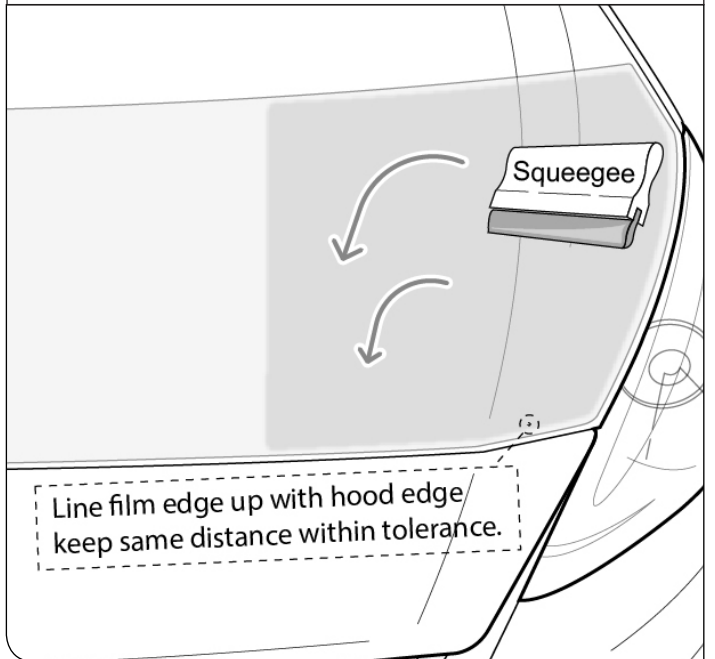
4

Lightly run your hand through the indentations in the hood to secure hood down. **Do not remove water in area with hand.**



5

From the squeegeed area (alcohol tack) begin to squeegee in the direction shown, removing all air bubbles and excess moisture.

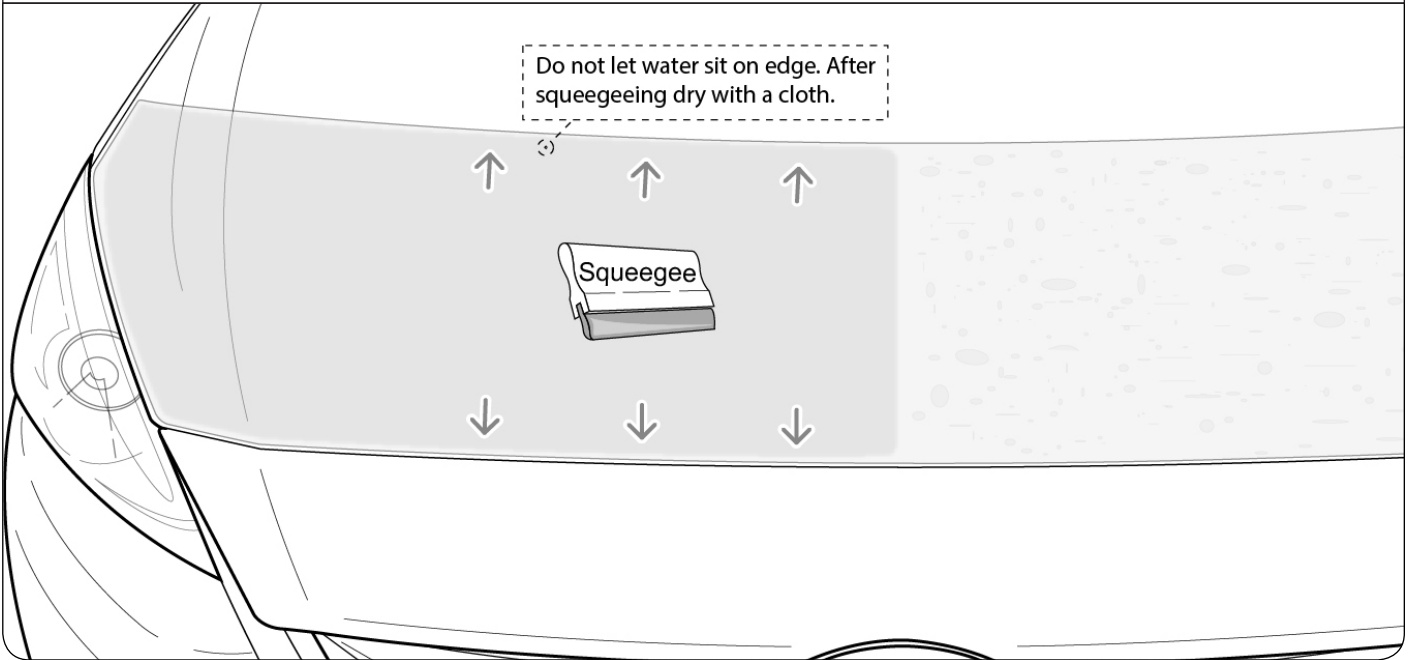


Hood Continued →

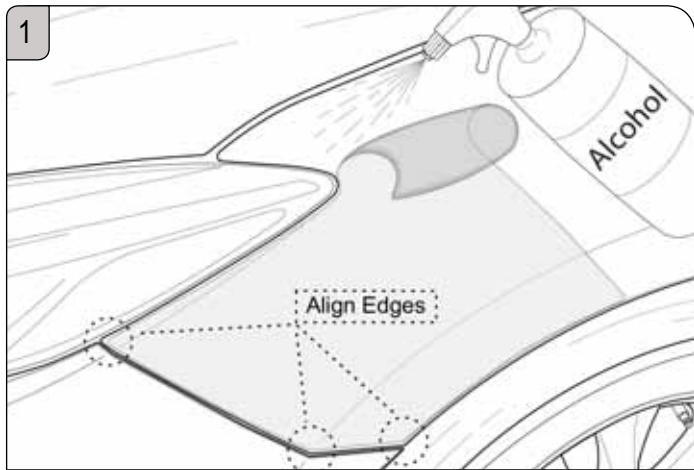
(ENTIRE PPF HOOD SECTION SHOULD SHOW SAME CONSISTENCY ALL ALONG IT'S EDGES)

6

Lastly, squeegee outward toward center. Repeat steps 1-5 on the driver side of hood. When finished use a dry cloth to go over the squeegeed areas.



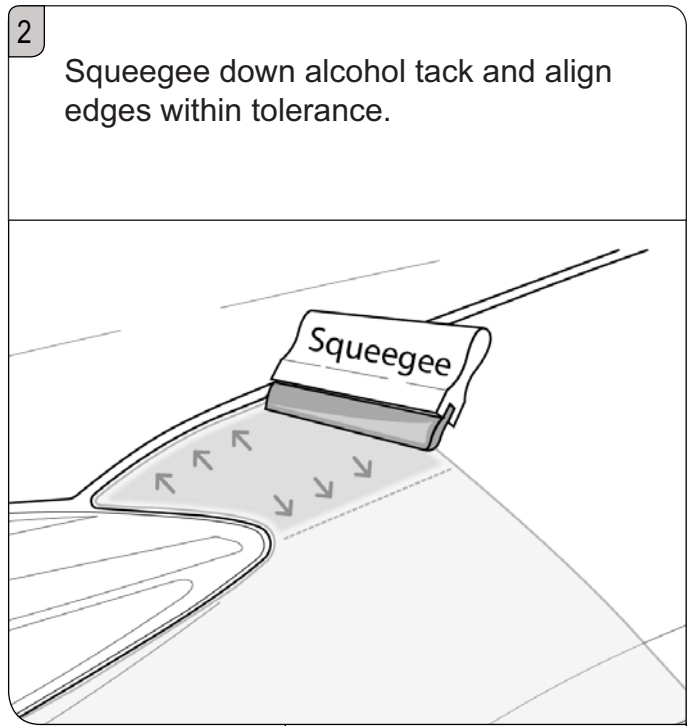
Fender Application



1

Prep surface for film placement. Spray baby shampoo mix and position film on fender, align edges properly

Next lift edge and spray alcohol.

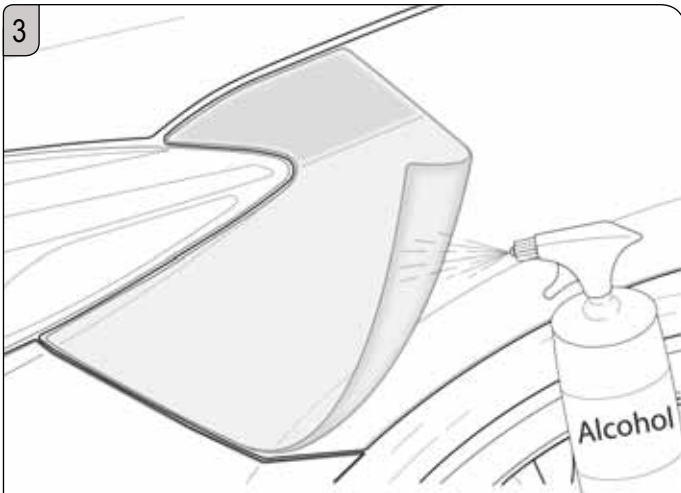


2

Squeegee down alcohol tack and align edges within tolerance.

Fenders Continued →

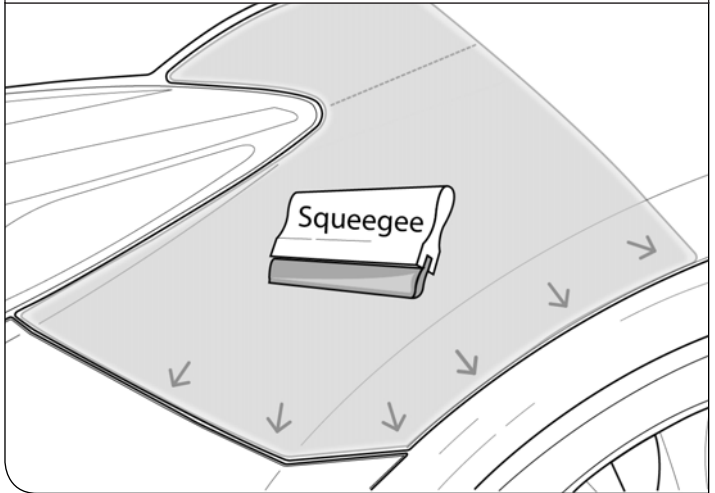
3



Lift up lower half of film and spray alcohol.

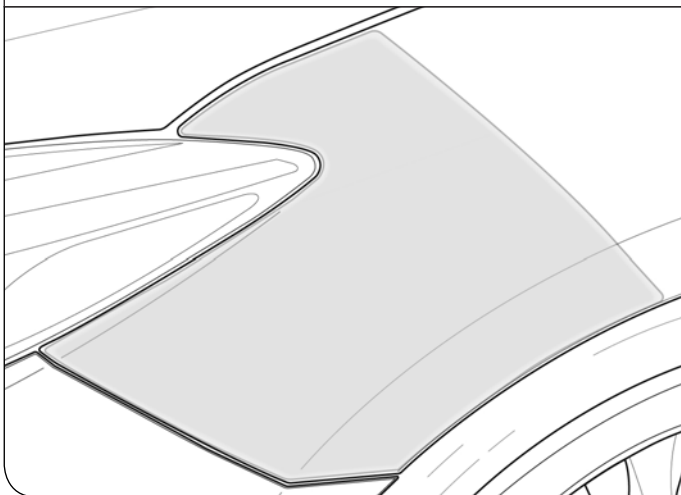
4

Pull film down, align edges with body shape and squeegee downward.



5

Dry down fender with cloth and repeat steps on reverse side, use heat gun when finished if necessary.

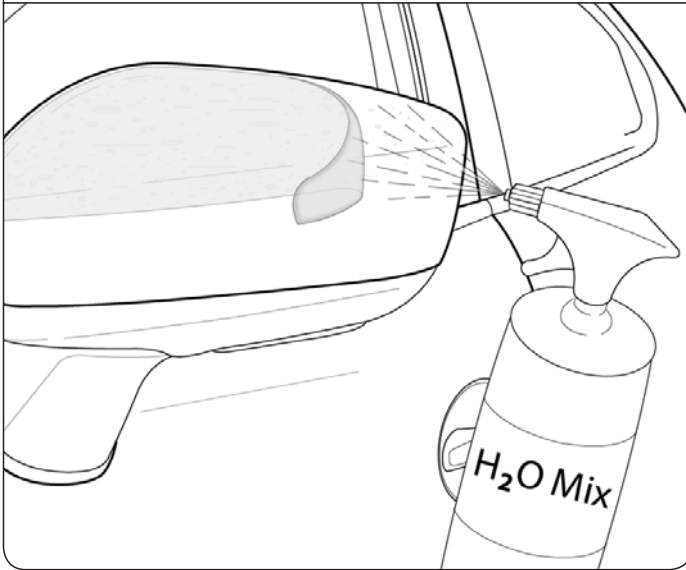


Mirrors →

Mirror Application: Top Half

1

Repeat process regarding wetting film and finger tips, and vehicle surface mentioned in previous sections. Then position film on the top half of mirror **2-3mm** from the top edge.

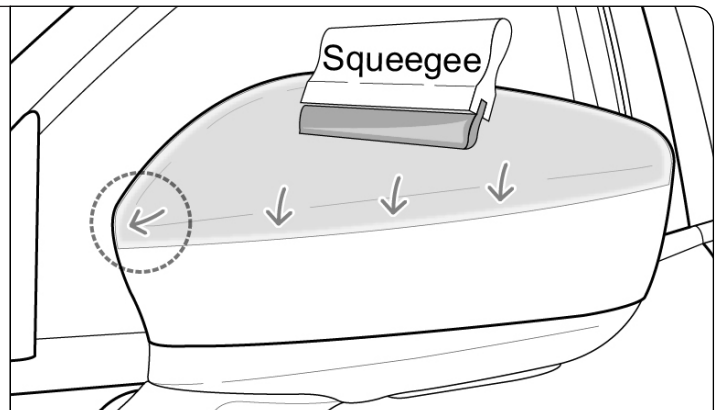


2

Fold down the top lip of film and spray alcohol then fasten down with squeegee.

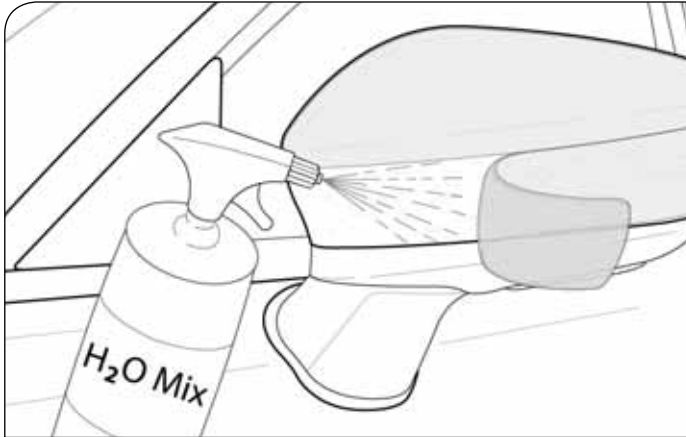
3

Squeegee alcohol tack at a downward angle and proceed to squeegee the rest of film. Work all creases out by stretching film. Use cloth to shape film around curved area **circled** in picture. Wipe edges with dry cloth.

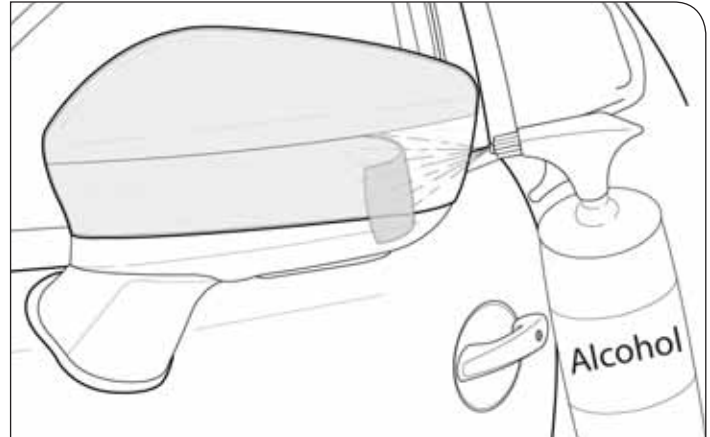


Mirrors Continued →

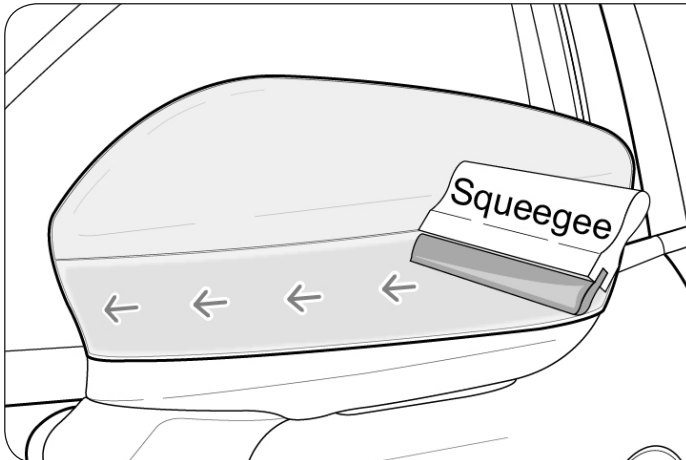
Mirror Application: Bottom Half



- 1 Spray bottom half of mirror with baby shampoo and position bottom mirror piece into place.



- 2 Create an alcohol tack in area shown. Then squeegee creating a lock, be precise about lines matching up.



- 3 Lightly stretch and shape piece with squeegee.
- Seal edges across the line as shown, as you go seam pieces as close as possible.
- Finally, use a dry cloth to help shape film.

Finishing Steps

After all parts of kit are installed (hood, fenders, and mirrors). Dry kit pieces using a heatgun.

ALL STEPS COMPLETED!

